

# SAP SolMan præsentation

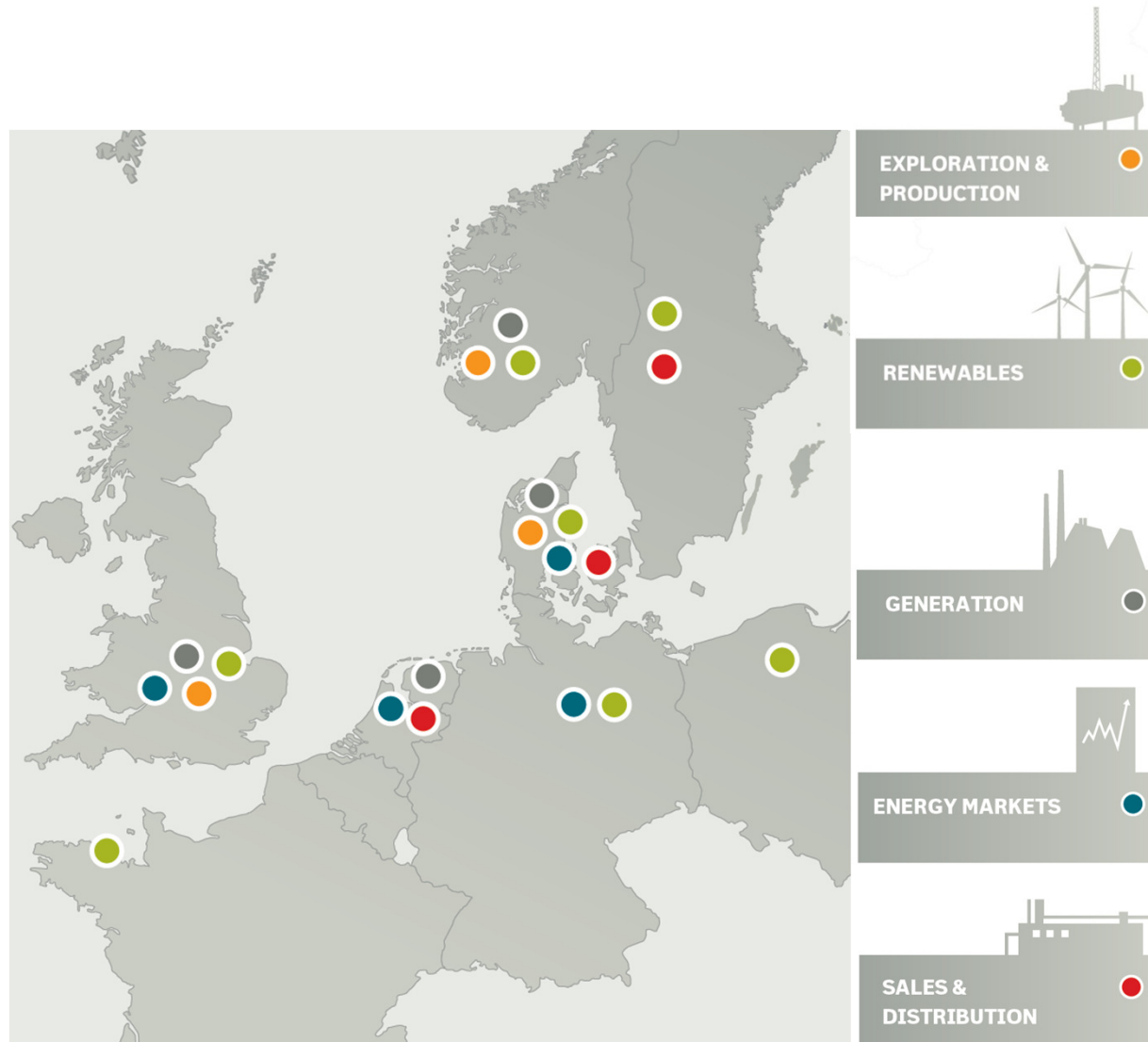
# DONG Energy



- DONG Energy Business
- SAP Systems
- Supporting Services : Solution Manager Strategy
- Example SAR
- Future Application tool strategy



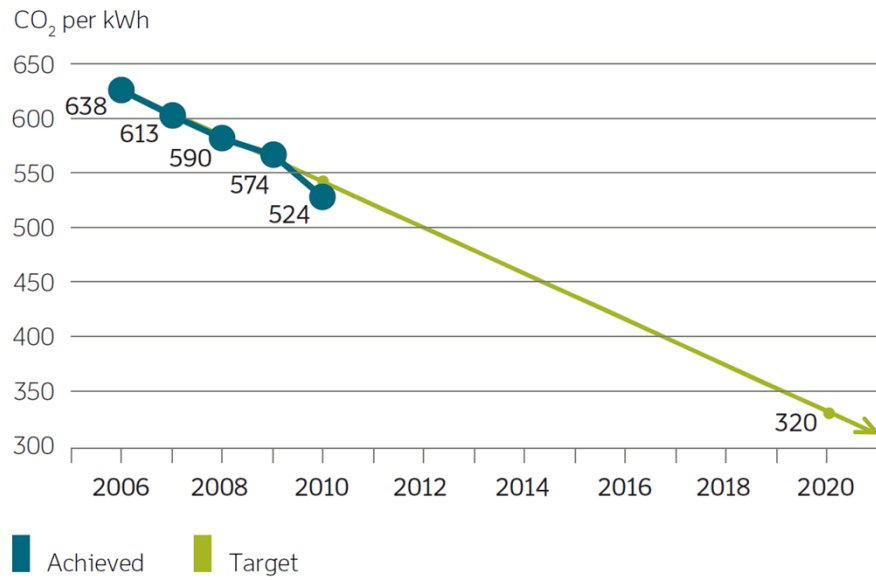
# The DONG business – our customers



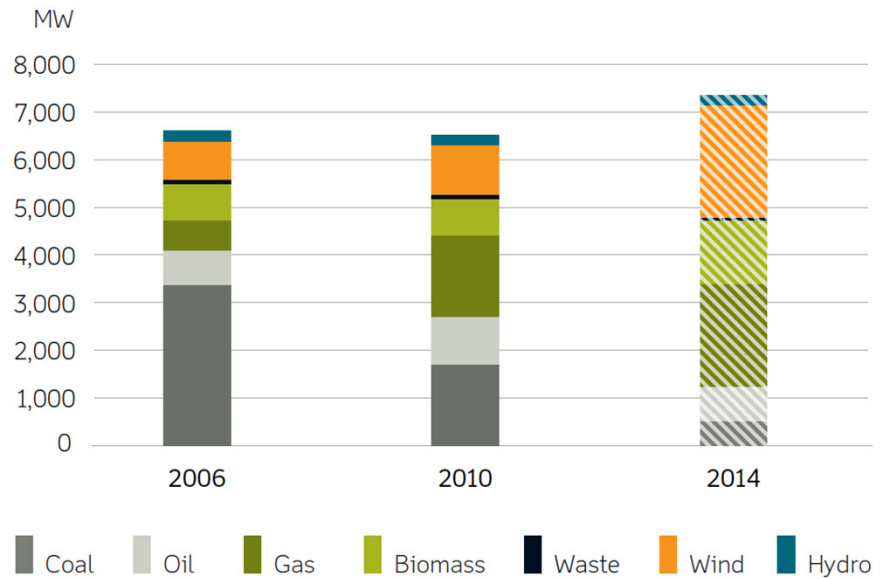
- Our customers are procuring, producing, distributing and trading in energy and related products in Northern Europe

# Moving towards a greener future

**CO<sub>2</sub> REDUCTION TARGET**

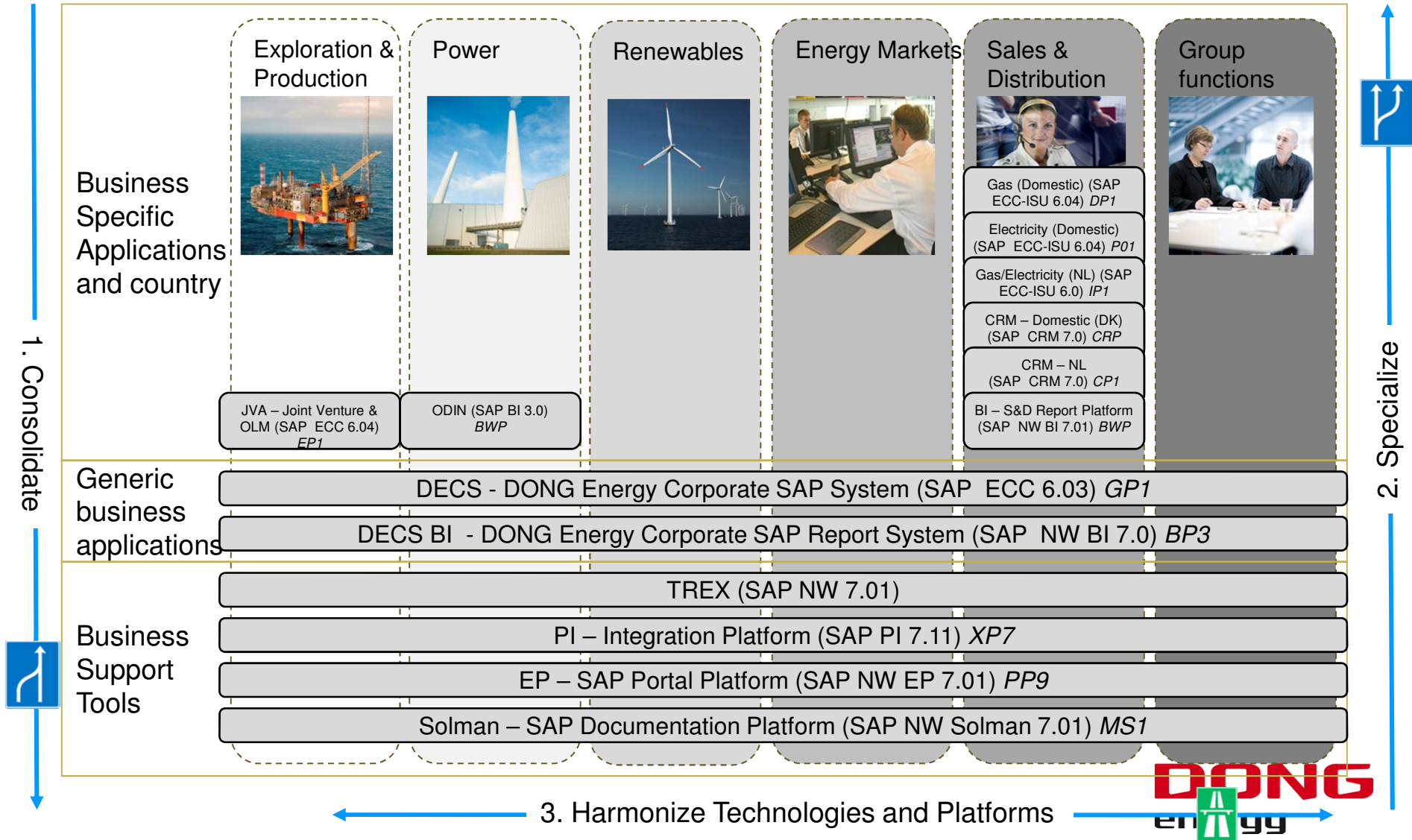


**THERMAL AND RENEWABLE ENERGY CAPACITY**



Note: Hatched column denotes estimate

# Applicable for these SAP Applications\*



\*A SAP application is for example DECS or EL-SAP. FMA (FICO) is an functional service

# Supporting Services

We make IT easier



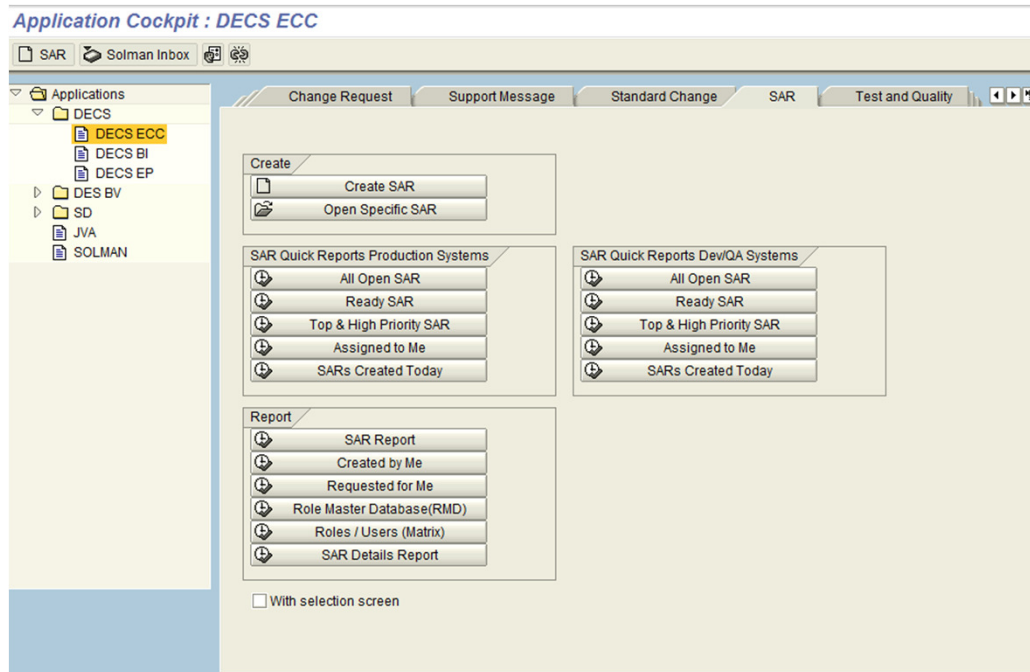
# Strategy for SAP Solution Manager

- SAP Solution Manager
  - is a central component and foundation for common IT processes and tools
  - is used for all SAP platforms
  - is used for all IT processes within **Release and Operations management** eg. : Change management, incident management, user and role administration

# Why SolMan SAR (System Access Request)

- The application should replace a number of different access methods/systems, so we had only one process/application handling user access to all of our SAP platforms.
- The new application should save time on creating requests and in the execution of the requests.
- It should also contribute the application consolidation, so we could be able to shut down several other tools.

# SolMan SAR – key functionality



- 2 user interfaces: Web for business users and SAP GUI for IT professionals and superusers.
- Create SAR via: Selecting specific roles, applying another users role and applying "user type"
- Workflow to role approvers and role owners.

# Future application tool strategy

